



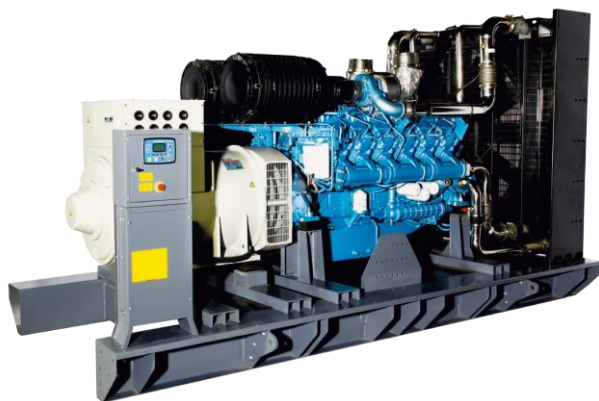
# ARMMAK

J E N E R A T Ö R

MOTEURS  
**Baudouin**

## BAUDOUIN

### Technical Specifications



#### ENGINE

- BAUDOUIN series heavy duty diesel engine
- 4 cycle, water cooled, turbocharged & air to air charge cooled /turbocharged & air to water charge cooled
- Direct injection
- Electronic governor system
- 24 volt self-starter and charger alternator
- Changeable air, fuel and oil filter
- Tropical type radiator
- Flexible fuel pipe
- Oil discharge valve and extension pipe
- Industrial type silencer, exhaust spiral or compensator
- Maintenance free battery
- Engine block water heater (in automatic models)
- Diesel gen-set maintenance and operating instructions and electrical circuit diagram

#### QUALITY STANDARD

Our generators are manufactured in compliance with VDE 0530, BSE 4999 BS5000, IEC 34, TS ISO 8528, TS EN ISO 3744, TS EN ISO 3746, TS EN 60034-1, TS EN 60204-1, TS EN 60335-1, TS EN 61439-1,

EN 61000, TS EN ISO12100 standards.

We have ISO 9001:2008, ISO 14001:2004, OHSAS 18001:2007 and ISO10002:2006 management system certificates from Kiwa & MEYER, an accredited independent quality organization.

Our generators up to 400 kw are manufactured in compliance with 2000/14/EC European noise emission directive and certified from Ente Certificazione Macchine.

We also have TS ISO 8528-4, TS ISO 8528-5, TS EN 13501-1+A1:2013 flame retardancy and TS EN ISO 9227 certificates against anti-corrosion together with CE Declaration.

#### ALTERNATOR

- Brushless, single bearing, flexible disc 4 poles alternator for harmonic failure
- H type isolation class
- IP 21-23 protection class
- Self exciter
- Electronic automatic voltage regulator
- Stator 2/3 step for harmonic failure
- The alternator windings are protected by insulating varnish against oil and acid.

#### EXTRA EQUIPMENTS

- Charge ammeter
- Moulded case circuit breaker (in automatic models)
- Hospital/Critical type silencer
- Sound-proof canopy
- Mobile - trailer
- Synchronization control panel for 2-16 gensets
- 3 pole/4 pole automatic transfer panel (A.T.S.)
- Fuel and oil heater
- Alternator heater
- Automatic fuel filling system
- Fuel-water separator filter
- PMG warning system

#### CANOPY

- Modular type sound-proof canopy
- Canopy installation executed with screw and nut, without welding process
- Epoxy and polyester powder painted canopy
- Canopy designed for easy maintenance
- Lockable doors on both sides of canopy
- Emergency stop button
- Transparent panel inspection window

#### AUTOMATIC CONTROL PANEL

- LCD display screen
- Hardware and materials needed
- Battery charger
- USB port & RS-485 output

#### GEN-SET SAFETY PROTECTION & ALARMS

- High water temperature
- Over current load
- Low oil pressure
- High & low genset voltage
- High & low engine speed
- Start/stop failure
- Low radiator water level



Easy maintenance canopy design



Refilling from the outside of the canopy



Canopy made of galvanized steel



Warning system for decreasing fuel with electronic fuel level sender





### BAUDOUIN Series Diesel Generator Sets 20-25-35-44-50-72 kVA

MODEL				ABJ-20	ABJ-25	ABJ-35	ABJ-44	ABJ-50	ABJ- 72
GROUP	GEN-SET POWER	STAND BY	kVA	20	25	35	44	50	72
			kW	16	20	28	35,2	40	57,6
		PRIME	kVA	18	23	32	40	45	65,5
			kW	15	18	25	32	36	52,3
	CANOPY DIMESNION (W x L x H) mm			900x1900x1220	900x1900x1220	1000x2300x1420	1000x2300x1420	1000x2300x1420	1000x2400 x1700
	CANOPY WEIGHT kg			801	801	964	998	1105	1313
	OPEN DIMENSION (W x L x H) mm			900x1600x1220	900x1600x1220	1000x1900x1420	1000x1900x1420	1000x1900x1420	1000x1900x1420
	OPEN WEIGHT			647	647	789	823	930	1138
ENGINE	BRAND			BAUDOUIN	BAUDOUIN	BAUDOUIN	BAUDOUIN	BAUDOUIN	BAUDOUIN
	TYPE			4M06G20/5	4M06G25/5	4M06G35/5	4M06G44/5	4M06G50/5	4M11G70/5
	POWER	STAND BY	kW	20	25	30	41	48	66
		PRIME	kW	18	23	33	37	44	60
	SPEED (rpm)			1500	1500	1500	1500	1500	1500
	CYCLE			4	4	4	4	4	4
	DISPLACEMENT (lt)			2,3	2,3	2,3	2,3	2,3	4,5
	NUMBER OF CYLNDERS			4 IN LINE	4 IN LINE	4 IN LINE	4 IN LINE	4 IN LINE	4 IN LINE
	BORE x STROKE (mm x mm)			89 x 92	89 x 92	89 x 92	89 x 92	89 x 92	105 x 130
	COMPRESSION RATIO			17,5 : 1	17,5 : 1	17,5 : 1	17,5 : 1	17,5 : 1	18 : 1
	GOVERNOR TYPE			MECHANIC	MECHANIC	MECHANIC	MECHANIC	MECHANIC	MECHANIC
	INDUCTION			NATURAL	NATURAL	TURBOCHARGED	TURBOCHARGED	TURBOCHARGED - AIR TO AIR COOLED	TURBOCHARGED - AIR TO AIR COOLED
	COMBUSTION SYSTEM			DIRECT	DIRECT	DIRECT	DIRECT	DIRECT	DIRECT
	COOLING SYSTEM			WATER	WATER	WATER	WATER	WATER	WATER
	FUEL CONSUMPTION lt / h	%100 PRIME POWER		4,7	6,1	7,6	9,5	10,7	14,5
		%75 PRIME POWER		3,6	4,5	5,7	7	8	11,0
		%50 PRIME POWER		2,6	3,2	4	4,7	5,4	7,7
	TOTAL LUBRICATION SYSTEM CAPACITY (lt)			9,5	9,5	9,5	9,5	9,5	10
	TOTAL COOLANT CAPACITY (lt)			16	16	16	16	12,9	15,3
	FUEL TANK CAPACITY (lt)			82	82	101	101	101	101

Armak reserves the right to make changes in model, technical specifications, color, equipment & accessories without prior notice.

**Armak Makine Mühendislik İnş. San. ve Tic. Ltd. Şti.**  
 Denizköşkler Mah. Tunay Sk. No:28  
 Avcılar / İSTANBUL / TURKEY  
 T: 0212 694 66 66  
 F: 0212 593 09 60  
 armakmakine@armakmakine.com  
 www.armakmakine.com